

Submission in response to Environmental Impact Statement for Dublin Array

An Offshore Wind Farm on the Kish & Bray Banks

Reference number MS53/55/L1

Appendix 'A' – Photomontages.



Contents:

Camera Location map

View 1: 65mm

View 1: 80mm

View 2: 50mm

View 2: 80mm

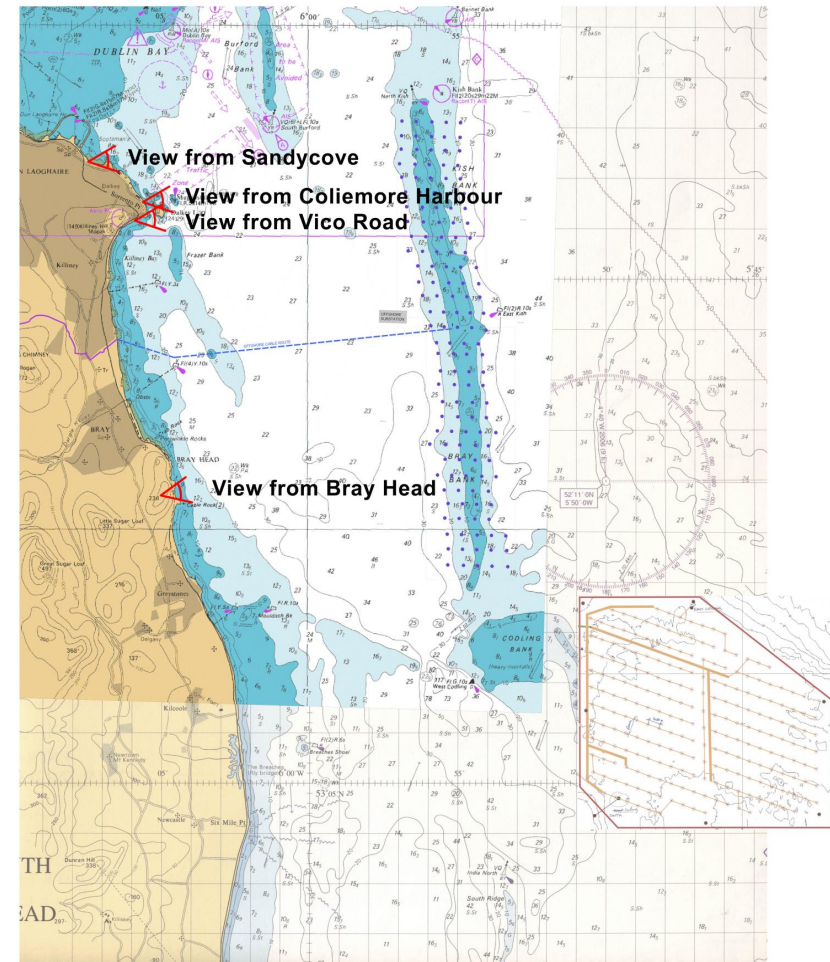
View 3: 50mm

View 3: 80mm

View 4: 50mm

View 4: 80mm

View 5: Panorama



65mm
View



mm MODELWORKS
MEDIA

Project:
DUBLIN AND WICKLOW WIND TURBINE ARRAYS

View 1
Impact on preserved view from Sandycove

May 2013

80mm
View



mm MODELWORKS
MCCOM

Project:
DUBLIN AND WICKLOW WIND TURBINE ARRAYS

View 1
Impact on preserved view from Sandycove

May 2013

50mm
View



mm MODELWORKS
MEDIA

Project:
DUBLIN AND WICKLOW WIND TURBINE ARRAYS

View 2
Impact on preserved view from Coliemore Harbour

May 2013



80mm
View

mm MODELWORKS
Ireland

Project:
DUBLIN AND WICKLOW WIND TURBINE ARRAYS

View 2
Impact on preserved view from Coliemore Harbour

May 2013

50mm
View



mm MODELWORKS
MEDIA

Project:
DUBLIN AND WICKLOW WIND TURBINE ARRAYS

View 3
Impact on preserved view from Vico Road

May 2013

80mm
View



mm MODELWORKS
MEDIA

Project:
DUBLIN AND WICKLOW WIND TURBINE ARRAYS

View 3
Impact on preserved view from Vico Road

May 2013

50mm
View



mm MODELWORKS
MEDIA

Project:
DUBLIN AND WICKLOW WIND TURBINE ARRAYS

View 4
Impact on protected views and prospects from Bray Head

May 2013



80mm
View

mm MODELWORKS
MEDIA

Project:
DUBLIN AND WICKLOW WIND TURBINE ARRAYS

View 4
Impact on protected views and prospects from Bray Head

May 2013



Project:
DUBLIN AND WICKLOW WIND TURBINE ARRAYS

View 5
Impact on protected views and prospects from Bray Head

mm
MAY 2013